



JUNE NVARC Meeting Agenda!

21 May 20





Biz

- **In the beginning**

- *Convene promptly at 1930.*
- Introductions, including visitors' welcome and new members' acknowledgement

- **News**

- Treasurer's reports or news
- New members?
- Secretary's reports or news
- Old business
- New business – special meeting





Special meeting!

- Purpose: Vote on changes to constitution
- Start
- Verify Quorum
- Vote
- Adjourn





Activities New and Old

- ~~Raffle tickets~~ “We will have a raffle in the future!”
- Activities status
 - Public Service events, what may be on deck for this year?
 - Ralph / Stan/ Skip/ Gary
 - Member’s items of interest!
 - [Anything anyone wants to talk about for a ½ minute or 2]
 - Upcoming contests and operating events
 - FD will be the main event this month
 - Seeds
 - How about the 2x18650 vs. lantern battery challenge?
 - Jessica’s Mobile radio rally!
 - Fund raisers

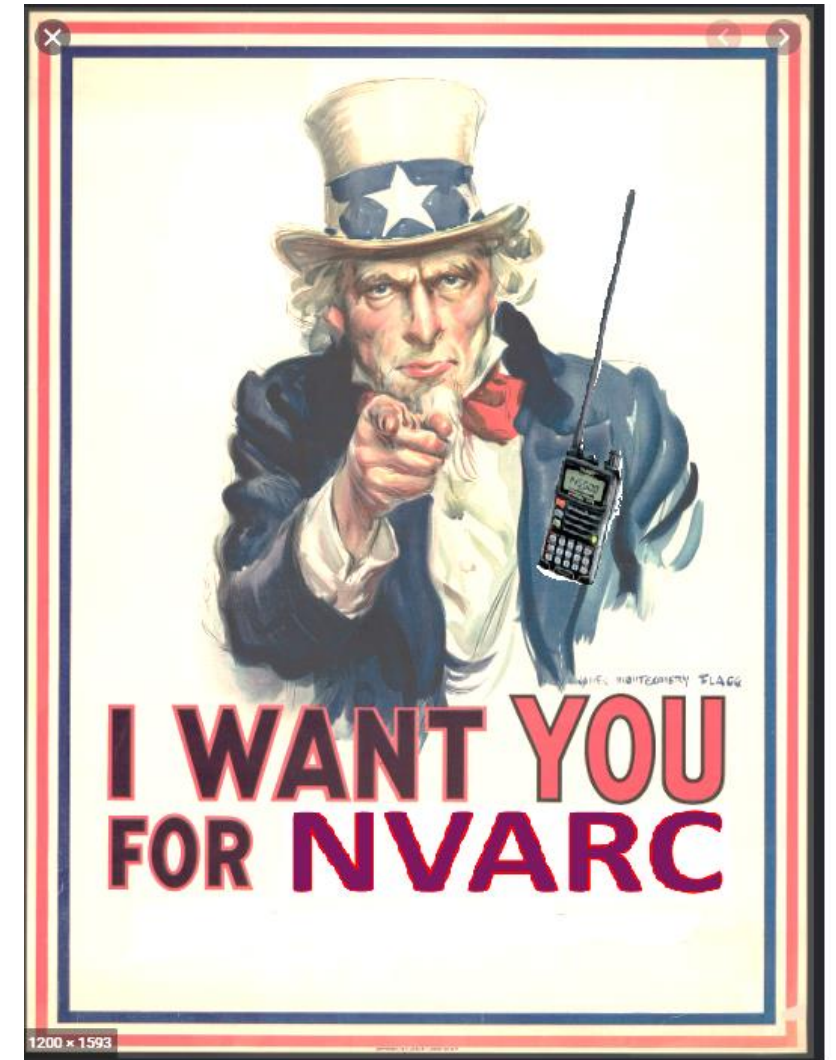




Volunteers

- ~~Social media coordinator~~
 - ~~Increase our net presence~~
 - ~~market toward new and younger members~~
- Monday night VHF Net coordinator
 - Jessica cannot do it all the time
- License Classes: See Bruce!
 - We need some muscle to make this happen
- Kits Task Force
 - Jim Hein and I will make this happen!
 - Submit your desires.
 - 630M transverters? 2 votes!
 - Microwaves?
 - WSPR tuna tins?

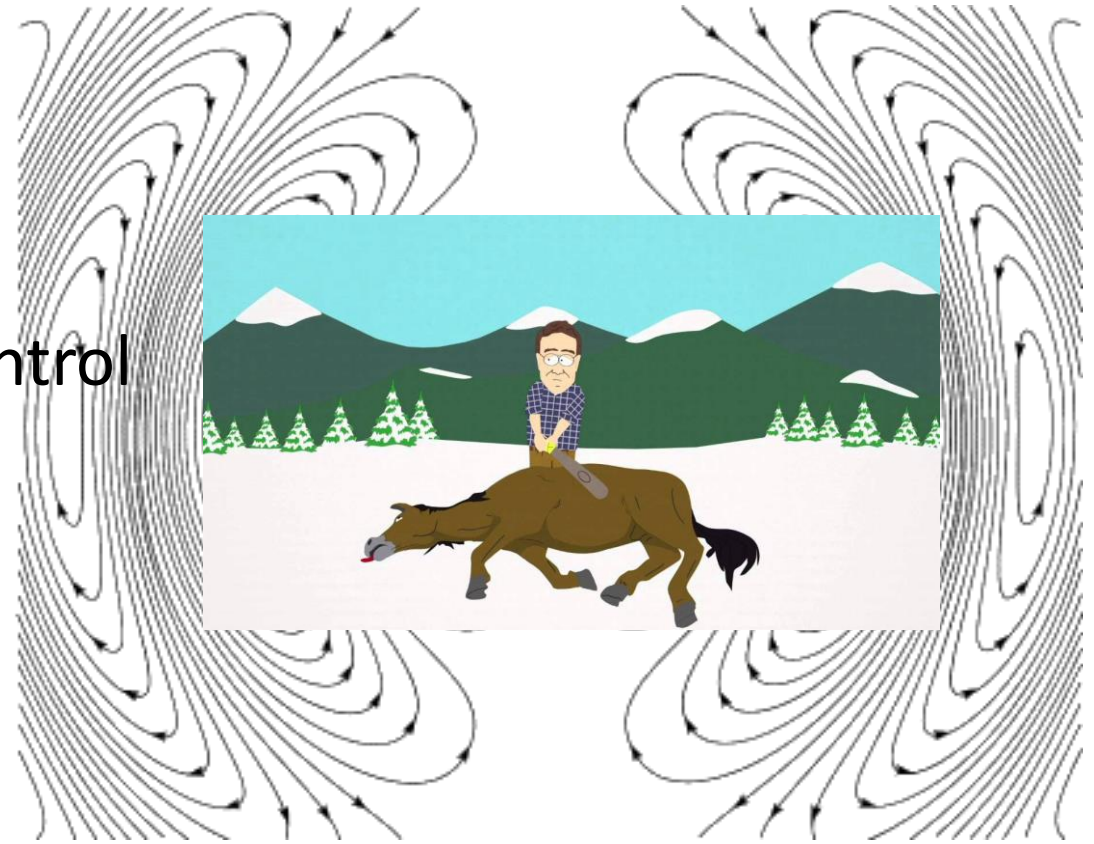
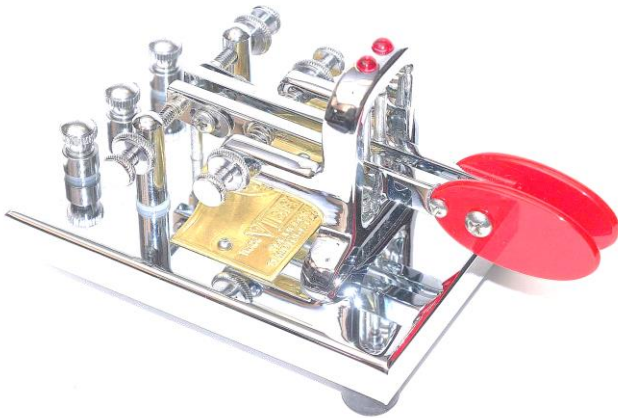
Gold Star George!





Nets

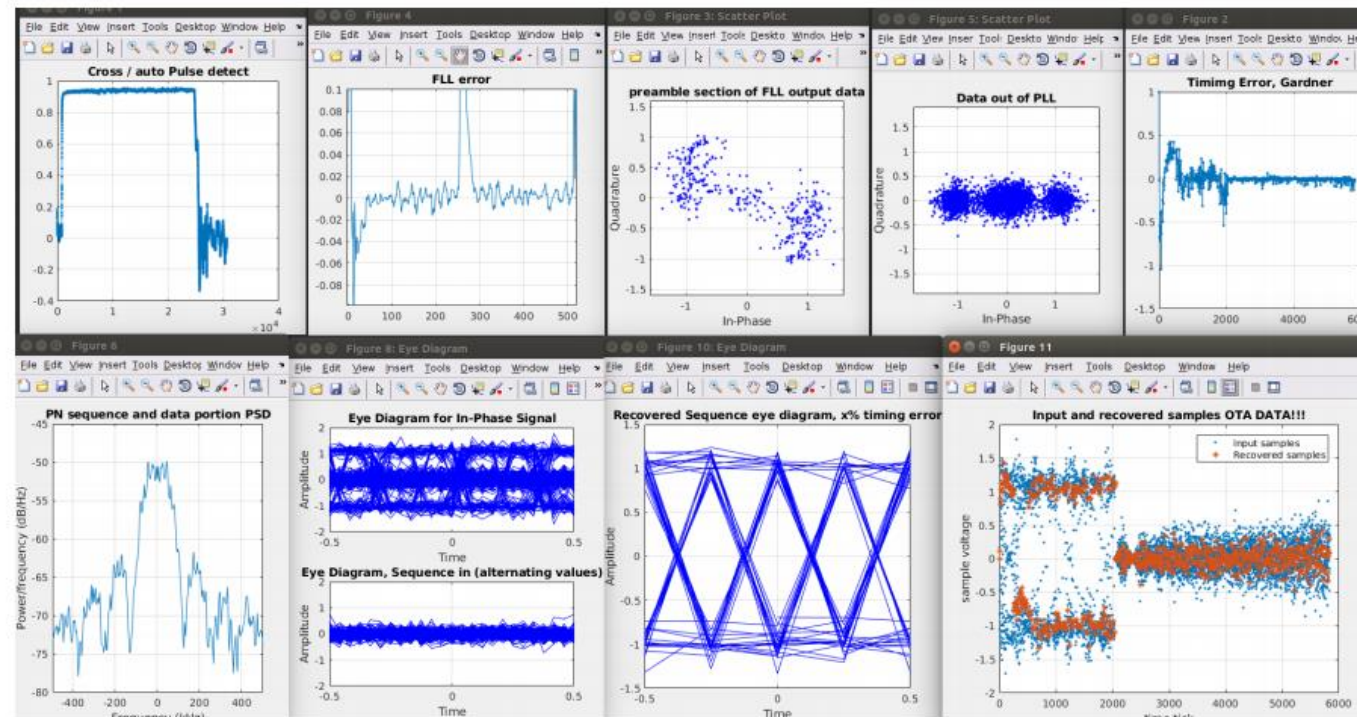
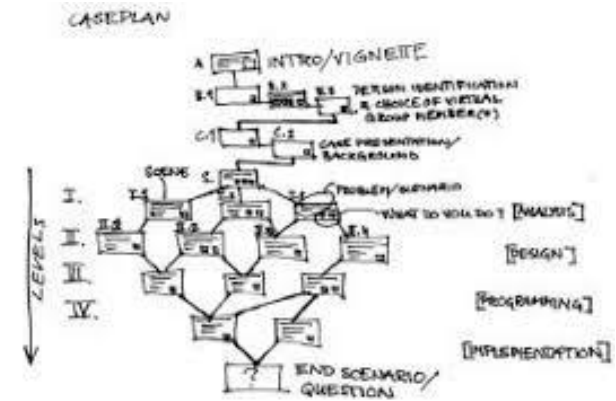
- Need regular Monday Repeater net control
- How about some new ones
 - Weak signal VHF/UHF / Microwave nets
 - Slow speed CW practice group





Technical Vignette

- Jessica's MODEM project video
- Just “priming the pump” for more on MODEMS in the future.



THE MAIN EVENT



FIELD DAY!

Jessica,

I have confirmed with town staff (Board of Health and the Conservation Commission) that the NVARC Field Day can go forward.

I have spoken with our Conservation Commission volunteer who mows at the Heald Street Orchard and he expects to be able to mow the area where the NVARC sets up.

Please feel free to contact me if you have any questions. I can be reached via cell at 978-314-1910.

Paula Terrasi
Conservation Administrator



May NVARC FIELD DAY PLAN

13June20





Basics:

- The goal of the club/organizers is to provide a field day operation and training for those who wish to participate within the details of the Plan
- It isn't going to be like any other year, because this year isn't like any other year.
- The Plan will dictate how, when and where things will be done.
- Adherence to the plan will ensure compliance with CDC guidelines and government rules and minimize risk
- Fundamentally Field Day is an emergency preparedness exercise, and that is just how it will be run
- Obviously (or perhaps not) no one is required to come, but if you want to come please do!
- The score is not important: Being safe in accordance with CDC and government guidelines is.
- This plan should achieve compliance with all current guidelines.
- **No one should do something that take out of comfort zone**

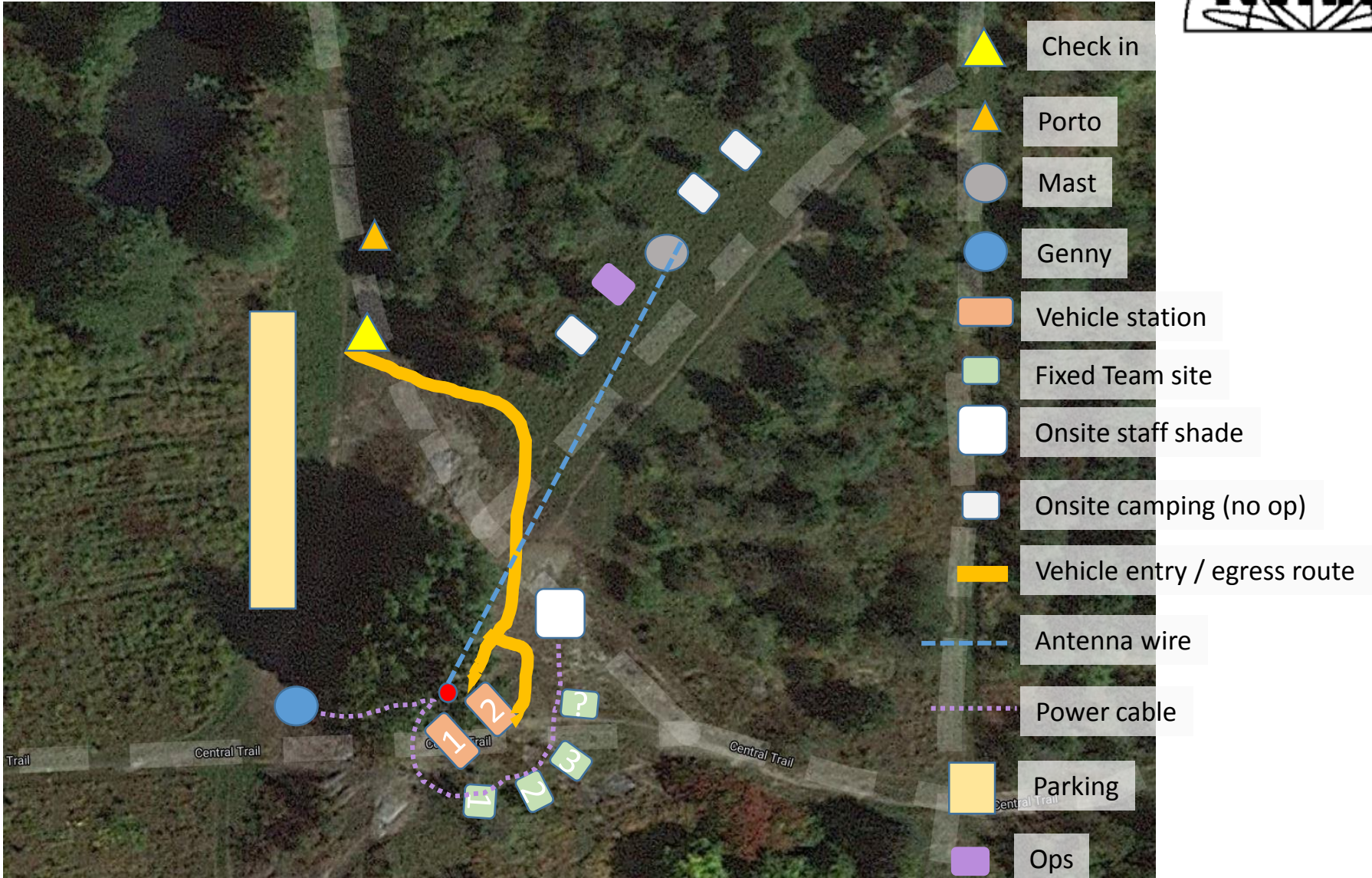


an: overview



- The event will be held in the usual spot (at the Heald St Orchard)
- We have a permit from the town and our proposed plan was integral to getting that permit
- What there will not be:
 - No common operator stations
 - No common food (bottled water will be available)
 - No communal eating area
- What there will be:
 - Scheduled self-contained stations, one operating at a time (more details following pages)
 - One umbilical for the scheduled operating team with
 - Power
 - Network
 - Antenna
 - Port-O-Potty with hand washing station
 - Someone will be present the whole time to coordinate operations. (Probably Jessica, JimW or JimH or Bruce)
 - Shade from the death rays of the sun

Site plan



Operating positions are at top of knoll where FT8 was last year



The Plan: Operating

- Individuals or teams wishing to operate together can:
 - Bring their equipment in a vehicle and operate from the vehicle or adjacent to the vehicle on a bench or shade/screen structure provided it can be set up and removed completely within 1 hour before and 1 hour after the scheduled operating slot
 - Set up a permanent operating station for use only with their identified team and time slots adequately far from all other positions, but within range of the umbilical
- One team operating at a time.
- Teams coordinate via 2M FM simplex with Ops (radio will not be provided) 146.400 MHz
- Team stations must conform to station requirements (see that page later)
- The total number of vehicle positions will be 2:
 - One operating, one setting up / tearing down
- The total number of fixed team site positions is TBD, but probably 4ish
- The teams must be self-contained for help and all equipment except for power, antenna and network: this includes a computer. (see team requirements)

Off air time

- If people don't understand what to do
- Something goes wrong
- A question arises
- A staff volunteer is unavailable

The right thing to do is just stop and wait in a safe social-distanced matter.

That may mean we are off the air. That is OK

The plan: executing station changeover

- Vehicle Teams
 - Vehicle arrives on site within 1 hour of time slot or exits parking in same time frame
 - Waits at check in point for OPS to respond on 2M simplex
 - Ops coordinates movement of vehicle
 - Team sets up in assigned site
 - Once in place, when slot commences, OPS cleans umbilical and hand to team
 - Team verifies power, access to logging computer and acceptable VSWR
 - Ops clears team for on air exercise
 - When time slot expires, team contacts Ops
 - Ops facilitates removal and cleaning of umbilical
 - Team tears down and vacates operating position
 - Team can park in lower parking if they want

The plan: executing station changeover

- fixed site team
 - Ops contacts team within one hour of time slot on 2m simplex
 - Team gathers in the operating position
 - When slot commences, Ops cleans umbilical and hands it to the team
 - Team verifies power, access to logging computer and acceptable VSWR
 - Ops clears team for on air exercise
 - When time slot expires, team contacts Ops
 - Ops facilitates removal and cleaning of umbilical

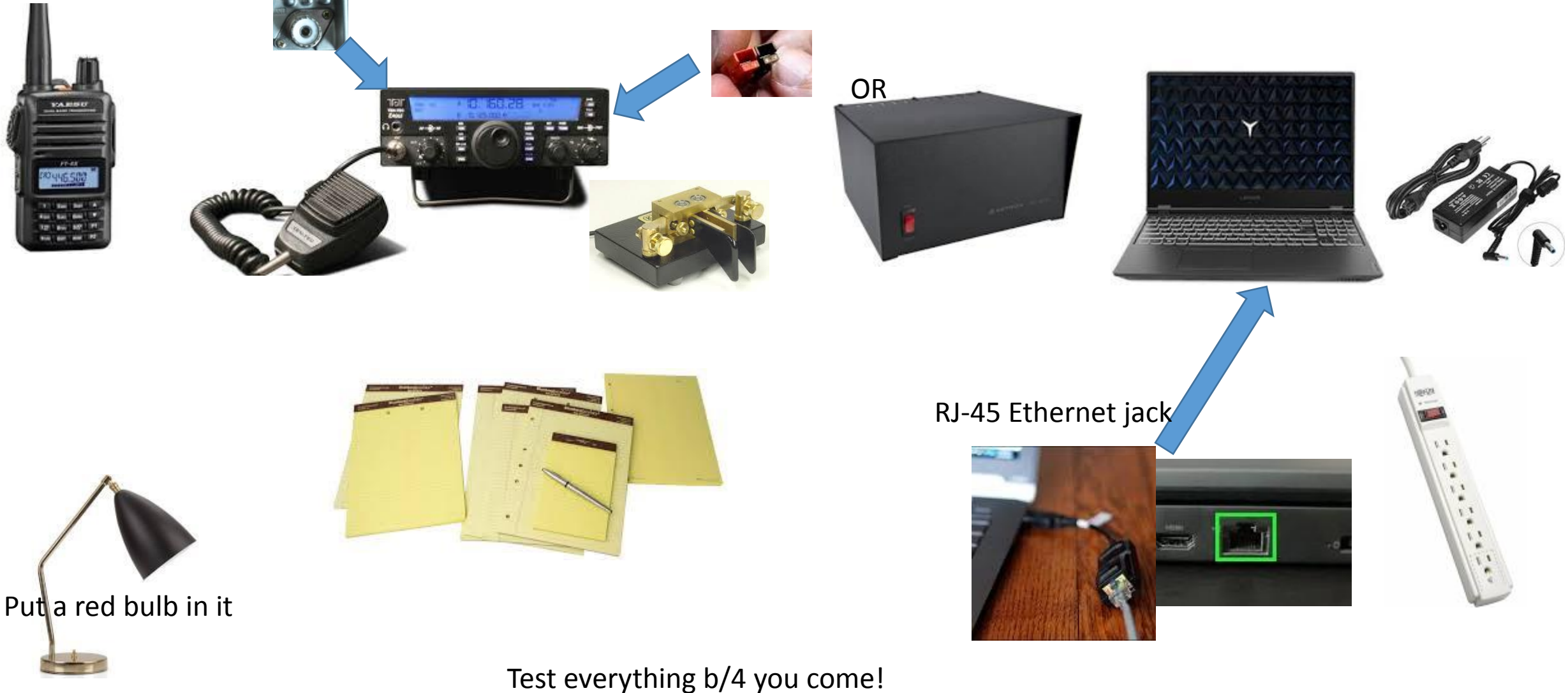
The Plan: Problems

- If any problem occurs, contact Ops on 2M simplex
 - Or yell!
- Safety will be prioritized over operating
- Ops cannot fix team equipment or provide replacements
- If team cannot operate, and another team is available and willing, operations will be transferred by Ops.

The Plan: Fixed team stations logging

- IF it is possible, and someone can be in charge:
 - The computers could be networked to facilitate easier logging.
- Open for discussion IMO
 - Bruce is thinking

What you should bring if you want to operate



What you will get

- 120VAC supplied by an N8VIM's 8 KW generator (or whatever its)
- 13.8 VDC @ 30 amps max also available (but less cable),
 - connected via 40 amp Anderson Power Pole connectors.
- The antenna will be an end fed half wave 80 meter dipole, resonant on 80/40/20/15/10 meters
 - Prudent to have an antenna tuner!!
- “If you want to work VHF/UHF, bring your own antennas!”





The Plan: Team station requirements 1

- Except for power, network, and antenna must be self contained
- Must have:
 - 2M rig for on site coordination via simplex (handheld / etc)
 - Rig capable of bands and modes you want to operate including all support accessories
 - Antenna tuner required
 - Laptop or computer capable of accepting Ethernet cable and remotely logging into logging computer(WIFI was interfered with in the past)
 - Scrap paper and writing implements
- Accept power (either or both)
 - 120V AC 15A Standard single receptacle
 - 40A power pole connector 13.8VDC 30A (red positive)



The Plan: Team station requirements 2

- Accept PL259 antenna cable jack
- Accept RJ45 Ethernet cable
- Operate in vehicle or adjacent to vehicle (tail gate, table , screen pop up etc.)
- Vehicle positions: Capable of setting up in 1 hour and tearing down in 1 hour.
- Must not require assistance outside of selected team (or have request assistance in advance)
- Must schedule time slot in advance
- Must be within identified position boundary
- Should have: Food, drinks, snacks, toiletries, bug repellent, sun block, lighting, etc.
- Teams should be limited to 2 or 3 people to avoid accidents or protocol violations



The Plan: Logging

- There will be two logging methods
- One:
 - For non-digital modes or modes that do not automatically self log (FT8/FT4) the team will supply their own computer that will be able to use site network to remote into the site logging computer
 - A single copy of N1MM will be running on the site computer
- Two
 - For modes that automatically log (FT8/FT4 etc) The log file will be exported to the site computer when their scheduled shift is over
- Teams must have a computer that is capable of remotely logging into a windows 7/10 machine
 - For windows 7/10 nothing is required – it is a built in function (see the detail on that)
 - For Mac or Linux a software tool that allows remote log on is required

The Plan: windows remote log on client

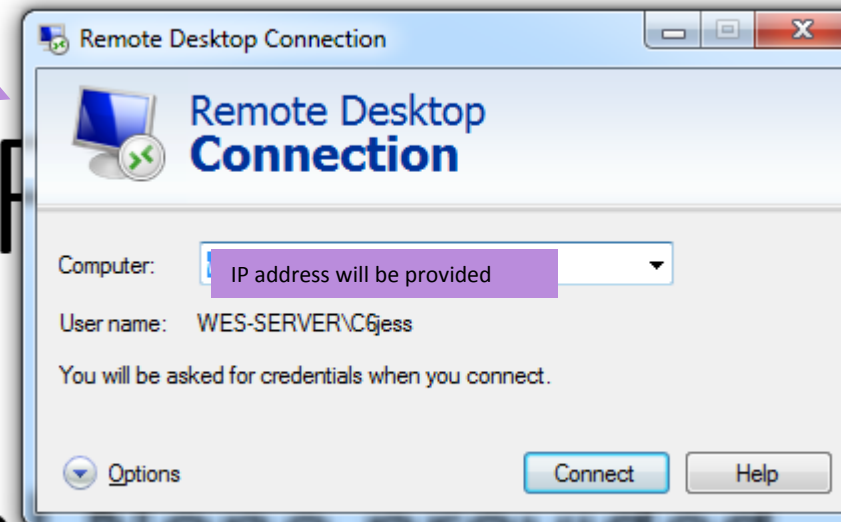
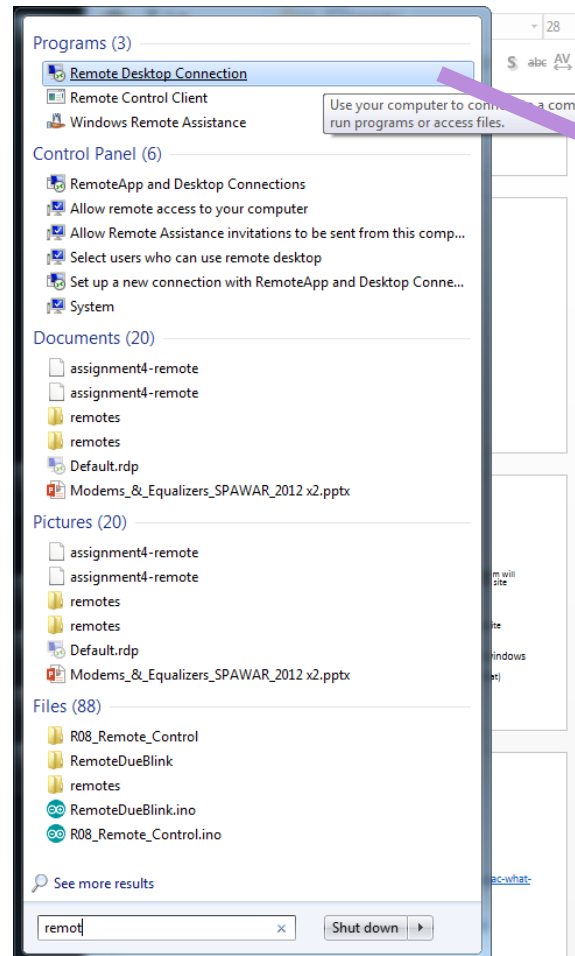


- Windows 7 or 10 *preferred*
 - Built in, nothing required
- Mac
 - <https://www.techrepublic.com/article/pro-tip-remote-desktop-on-mac-what-you-need-to-know/>
- Linux
 - <https://www.techradar.com/best/best-linux-remote-desktop-clients>
 - I use remmina: <https://remmina.org/>



Remote client on Windows

This is not to teach you how to do it:
will be reviewed at meeting



/n! None provided.

Jessica's DEMO



The Plan: Food

- Bring your own! None provided.
- Bring your own beverages / water
- Operating Teams can do whatever they want within their team space
- All others should observe COVID-19 rules in accordance with Mass and CDC
 - Face masks
 - Social distancing
- Please do not bring shared food etc



The Plan: Port-O-Potty

- We will have one on site
- It will have a hand washing station and sanitization equipment
- Wash your hands!
- Clean the porto before and after you use it with provided supplies!
- Please keep it clean, don't make a mess!

Staff so far (Limit is 10 per COVID guidelines)

- “Staff” are people setting up and tearing down and helping the operator teams execute the plan. They may be on site the whole time.
- The number does not include operator teams.
- Jessica WU3C
 - Ops / setup / some operating slots
- Bruce K1BG
 - Ops / setup / lots of operating slots?
- Jim AB1WQ
 - Setup / Budget / Supplies/ entry coordination / operate slot / etc
- Jim N8VIM
 - Power master / Network Master / ops? / operating slots?
- Peter N1ZRG
 - On Jessica’s Team
 - Ops / setup / ?



- Member show and tell
- Raffle (later)
- Adjourn on or about 2130.
- BS session